



elev**v**ator
packages



BTS Elevator Packages is the culmination of over three decades of experience in elevator design, engineering and sales. Our story began more than 30 years, when HM Elevator emerged as a supplier of elevator parts, distributing sheaves, car slings, safeties and various other parts to manufactures in the United States and around the world. HM recognized a need for a complete elevator system and, in 2000, ventured with G-Tech Elevators, a US-based company, to develop such a system. Through trial and error, HM and G-Tech's engineers and R&D teams were able to obtain UL and CSA certificates of approval in the United States for both their elevator system and its installation.

G-Tech Elevator seized the opportunity to use New York City, the world's largest test tower, to introduce its system to the marketplace and create the pathway for independent companies to compete with the OEM's of the industry. This line of all-inclusive elevator packages has produced several hundred proven installations in the NYC metro area, ranging from two stops 200 FPM to 40+ Stops 1000 FM. G-Tech Elevator transformed the elevator system into a user-friendly, non-proprietary elevator package using U.S.-based machines and controllers and a "plug-and-play" wiring concept not to mention a keen eye on product shipping and handling.

The fully integrated package cleared the way for G-Tech to grow from low-rise/low-speed products to high-rise packages with speeds of up to 1000 FPM—and earned G-Tech recognition in the INC 5000 list of America's fastest growing companies. To this day, G-Tech elevator continues to enjoy this success and to improve the product line and its methods of installation and delivery.



Based on the success of our all-inclusive elevator packages, HM and G-Tech have decided to extend our venture and offer our product to elevator contractors throughout the United States marketed, engineered, managed and shipped by BTS Elevator Packages.

Our experienced sales force is able to analyze specifications and drawings for single and multiple elevators for low and high-rise projects and provide you with a competitive, prompt and informative quote. Accompanying our quote will be a specification outline that lists the details of the individual components and summarizes any special terms and conditions.

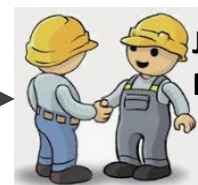
Once awarded the project, BTS Elevator Packages using our in-house project managers will immediately commence on our promise to handle all logistics, including order confirmation, construction drawings review, engineered layout production, integration of special requirements, final drawings approval, package fabrication and delivery to your job site.

BTS Elevator Packages will strive to earn your business and will not rest until we are your one-stop shop for a high-quality elevator package. We are fully committed to providing you with unparalleled SERVICE, from the sale through delivery.

Site
Unload



Install



Job Well
Done

MRL (BUILDING SUPPORTED)

- Eliminates the need for a traditional machine room
- Elevator machine located in the Hoistway
- Low- to mid-rise buildings having up to 250 feet of rise
- Less expensive than geared traction systems
- Speeds Up to 500 fpm
- Imperial Machines

**MRL (SELF SUPPORTING)**

- Elevator machine and sheaves self supported on top of car & cwt guide rails
- No traditional building pockets or building required
- Capacities: 2,000-3,500 lbs
- Speeds: 100 to 350 fpm
- Travel (limited) to 50'-0"
- Imperial Machines

**COMING
SOON**

GEARED OH TRACTION

- Traditional roof top or basement motor room
- Low to mid-rise buildings
More expensive than MRL traction systems
- Speeds Up to 500 fpm
- Imperial Machines



GEARLESS OH TRACTION

- Traditional roof top motor room
- Mid to high-rise buildings
- Higher speed applications
- Imperial Machines



Complete Package (TURN KEY)

1. Car Sling w/ roller guides, platform, and car safety
2. Counterweight frame w/ roller guides and fillers
3. Car and counterweight buffers and pit channels
4. Car and governor ropes w/ wedge shackles
5. Pit switch, limits switches w/ brackets, load weighing device
6. Travel Cable, hanger, and hoistway wiring harness
7. Traction machine w/ pre-engineered machine beams
8. Governor and tail sheave
9. Car and counterweight rails w/ brackets and hardware
10. Controller and landing device
11. Standard fixture package- swing return COP, hall buttons, car lantern, hall P.I. at main floor
12. Standard base cab, handrail, and ceiling
13. GAL MOVFR door operator w/ car and hatch hangers, interlocks, closers
14. Entrance sub frames, doors, and jambs
15. Compensation chain (whisper flex) (if needed)
16. Misc. Parts: Braille, top of car protection rail, pad hooks, counterweight guard, hoistway duct
17. Delivered to Jobsite

Controller notes:

We will provide Engineering and Equipment Data to the Elevator Controller Manufacturer that you prefer as part of this package. The list of Manufacturer's are shown on Controller page 11.

Partial Package (BASE) includes:

1. Car Sling w/ roller guides, platform, and car safety
2. Counterweight frame w/ roller guides and filler weights
3. Car and counterweight buffers and pit channels
4. Car and governor ropes w/ wedge shackles
5. Traction machine w/ pre-engineered machine beams
6. Governor and tail sheave
7. Car and counterweight rails w/ brackets and hardware
8. Standard base cab, handrail, and ceiling
9. GAL MOVFR door operator w/ car and hatch hangers, interlocks, closers
10. Entrance sub frames, doors, and jambs
11. Compensation chain (whisper flex) (if needed)
12. Misc. Parts: Braille, top of car protection rail, pad hooks, counterweight guard, hoistway duct
13. Delivered to Jobsite

Items not included, but available to add:

- Controller
- Fixtures
- Wiring Package

Car-top locking device

The crosshead locking bolt mechanism engages a rail mounted plate in the overhead space on MRL applications when the car-top is used as a work platform. Power is removed from the motor.

Stiles and Crosshead

Roller guide mount plates/rail retention plates mount to the top of the crosshead flanges. Structural steel C-channel stiles and crosshead gusset plates make for a rigid car frame.

Door Operator

Industry standard high performance door operator equipment featuring encoder-less VVVF closed loop

Car Sling

Heavy duty car frame constructed of structural C-channel and angles designed in conjunction with the safety plank and sheave beams.



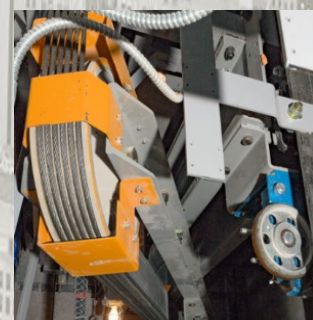
Safeties

Industry standard Type “B” flexible guide clamp or Type “A” instantaneous safeties (depending on speed) mounted under structural steel C-channel safety plank.



Safety Plank and Sheave Beam

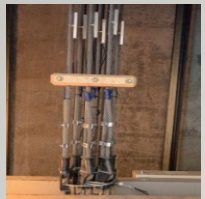
Underslung Sheave beam assemblies designed to pick on center of gravity. Safety Plank and sheave beams are constructed of engineered c-channel materials. All tapered washers and hardware are provided.





Overhead Structure

C-channels and plate materials as well as machine I-beams to build the traditional overhead structure for OHT and MRL applications. Engineered I-beams are provided



Wedge Shackles w-Isolation

Wedge shackles are supplied with isolation kits or under the car .



Governors

Remote set/reset feature (if applicable) included on MRL. Centrifugal, jaw type governor with over-speed sensing switch.

Platform Construction

C-channel floor joist construction with fire resistant sheet steel underside and heavy duty welded angle . Two layers of ¾" high density plywood secured with flush elevator bolts. Car sill recessed to accommodate floor thickness.



Counterweight package

Heavy duty C-channel and plate members comprise the rigid counterweight frame. Our Steel filler plates are super thin for easy one person handling. Retention rods are provided to tie the weight down.

Combination Brackets

We included the combination bracket on our MRL's to install the Cwt rails and car rail. We provide all associated rail clips, hardware, and rail shims.



Car and counterweight sheaves

Traditional cast iron compound sheaves are fastened to the sheave beam.



Models 472,475 & 478:

- Machine weights: 900-1,400 lbs
- 15.75 inch drive sheave
- (5-8) 10 mm undercut grooves
- 6,600-11,000 sheave shaft load



Models 522, 525 & 527:

- Machine weights: 2,600-3,500 lbs
- 20-25 inch drive sheave
- (6-7) 1/2 or 5/8" grooves
- 17,600-22,000 sheave shaft load



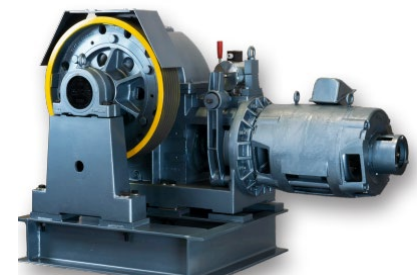
Model 700 OB (Double wrap) :

- Capacity: 5,000 lbs. @ 1:1 or 9,000 lbs. @ 2:1
- Speeds ranging from 100 to 1400 FPM
- U-groove, 25 inch drive sheave
- 12-5/8 inch grooves for up to 6-5/8 inch ropes, double wrap



Model TM 21-26 & 35 :

- Modernization and new construction
- Overhead machine room
- 2,000-6,000lbs lbs capacity
- Speeds from 100 to 400 FPM



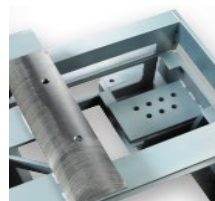
Sub-Base



Deflector



Encoder



Deflector Mount



Rope Retainers



Isolation

S

E

L

E

C

T



COMPONENTS



Single Speed Painted

ENTRANCES



C.O. Hairline Finish



Two Speed Glossy



C.O. Etched w/ Transom

GAL DOOR EQUIPMENT

All BTS Elevator Packages include GAL Manufacturing door equipment .

Our entrance headers, hatch doors, car doors, and car headers are all engineered and drilled to accept the best door equipment in the industry.

Our car Door Operator is the latest version of the MOVFR operator with clutch and linkages, car door header track and hangers rollers.

GAL provides Door Operators to the industry and is on the cutting-edge of creating new designs that will benefit the industry.

American Made:

Tracks, Hangers, Interlocks, Closers, Door Operator, Electronic Edge



HOISTWAY WIRING



“wiring made simple”

All electrical packages feature “plug and play” technology. Each circuit in the hoistway is formulated in a drop down harness provided with predestined predetermined labels. We customize all of the hoistway connections starting from the governor speed switch, top final limit, bottom final limit, various pit switches, and fixture signals.

Harness wires are easily unraveled at each floor and pulled into their destination and simply terminated. This process saves valuable time and labor.

TRAVEL CABLE



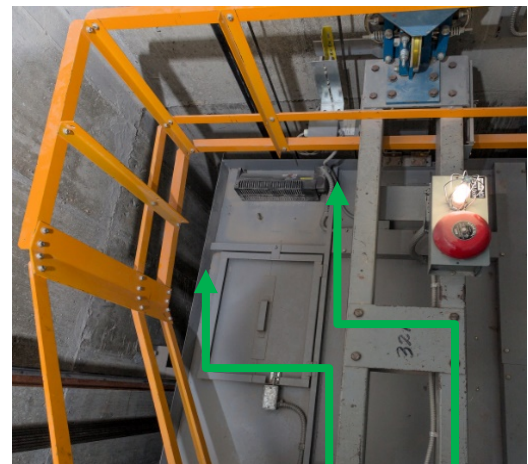
We customize all of our traveling cables to include the plug connector that connects directly into the controller. On the car side the traveler jacket is stripped back and each individual wire is labeled with a fork connector that wires into a predetermined terminal in the car station. From the car station a harness is provided to the Top Of Car Inspection (TOCI) Station. From the TOCI individual harnesses are then provided to all of the components top of the car saving countless man-hours.

Top of Car Safety Rail

Included (partial or complete)

Even if you do not purchase our cab options, we still provide the top of car safety rail as part of the partial elevator package

- Fast and easy to install
- Assembly hardware provided
- Kick plate provided for field adaptation with our cab system
- Designed to comply with latest code



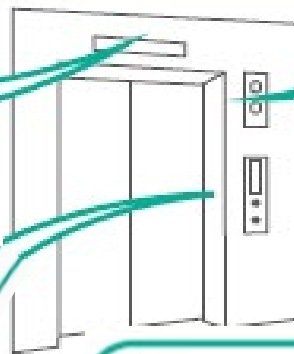
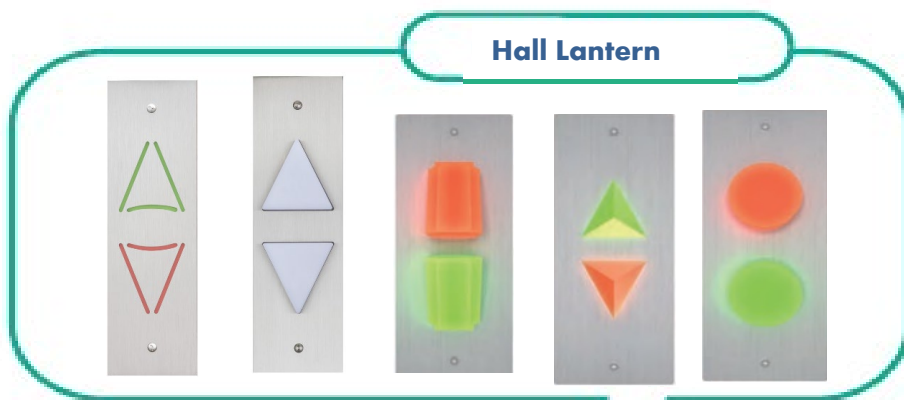
Steel kick plate portion of the cab dome

All hardware necessary for complete installation is supplied with the system

Hall Position Indicator



Hall Lantern



Hall Button Fixture



SELECT



Monitor Elevator Products

@MonitorElevator



INNOVATION
INDUSTRIES INC

HM ELEVATOR

Car Operating Panel (COP)



Button



Front View



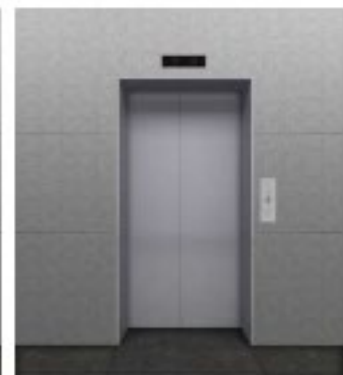
Rear View

SINGLE SPEED

w/ Transom (2 sp ss.)

w/o Transom

CEILING	HMC-CLO5
WALL	HM-S1 (STS hairline)
DOOR	HM-SQ (nano steel)
H. RAIL	HR-01
FLOOR	(optional- see chart)





SINGLE SPEED

CEILING	HMC-CLO3
WALL	HI GLOSSY SHEET STEEL
DOOR	HI GLOSSY SHEET STEEL
CAR ST.	COP-SW001
H. RAIL	HMR-22
FLOOR	(by-others)



TWO SPEED

CEILING	HMC-CLO8
WALL	HI GLOSSY SHEET STEEL
DOOR	HI GLOSSY SHEET STEEL
CAR ST.	COP-SW001
H. RAIL	HMR-13
FLOOR	(by-others)



CENTER OPEN

CEILING	HMC-CLO5
WALL	HI GLOSSY SHEET STEEL
DOOR	HI GLOSSY SHEET STEEL
CAR ST.	COP-SW001
H. RAIL	HMR-13
FLOOR	(by-others)



Front View



Rear View

CENTER OPEN

CEILING	HMC-CLO2
WALL	HM-BK4 (black bead) HM-GM3 (gemmetal)
DOOR	HM-SQ (nano steel)
H. RAIL	HR-01
FLOOR	HMT-06 (marble)

w/ Transom (c.o.)



w/o Transom





Front View



Rear View

CENTER OPEN

CEILING	HMC-CLO6
WALL	HM-P4 (special paint)
DOOR	HM-P4 (special paint)
H. RAIL	HR-02
FLOOR	HMT-06 (marble)

w/ Transom (c.o.)



w/o Transom





Front View



Rear View

SINGLE SPEED

CEILING	HMC-CLO1
WALL	HM-G3 (gold vibration)
	FUNDER MAX NT
DOOR	HM-G3 (gold vibration)
H. RAIL	HR-01
FLOOR	HDT-08 (decotile)

w/ Transom (s.s.)



w/o Transom





Front View



Rear View

CENTER OPEN

w/ Transom (c.o.)

w/o Transom

CENTER OPEN	
CEILING	HMC-CLO16
WALL	HM-B4 (bronze bead) HM-GM2 (gemmetal)
DOOR	HM-B4 (bronze bead)
H. RAIL	HR-01
FLOOR	HMT-01 (marble)



Ceiling



HMC-CL01



HMC-CL05



HMC-CL02



HMC-CL06



HMC-CL03



HMC-CL07



HMC-CL04



HMC-CL08

Painting



HM-P1



HM-P2



HM-P3



HM-P4



HM-P5



HM-P6

Etching Pattern



HM-H1



HM-SQ



HM-ST



HM-L1



HM-HL



HM-SS



HMmono



HMbrk



HMWD



HMGM2

Flooring



HDT-01



HDT-02



HDT-03



HDT-04



HDT-05



HMT-01



HMT-02



HMT-03



HMT-04



HMT-05

Handrail



HR-01



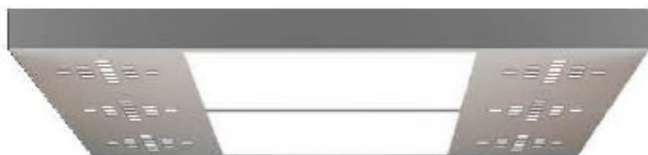
HR-02



HR-03



HR-04



HMC-CL01



HMC-CL05



HMC-CL02



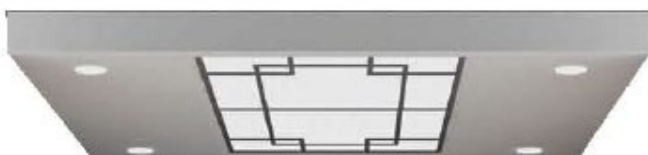
HMC-CL06



HMC-CL03



HMC-CL07



HMC-CL04



HMC-CL08



HMR-11



HMR-14



HMR-12



HMR-21



HMR-13















HMR-22

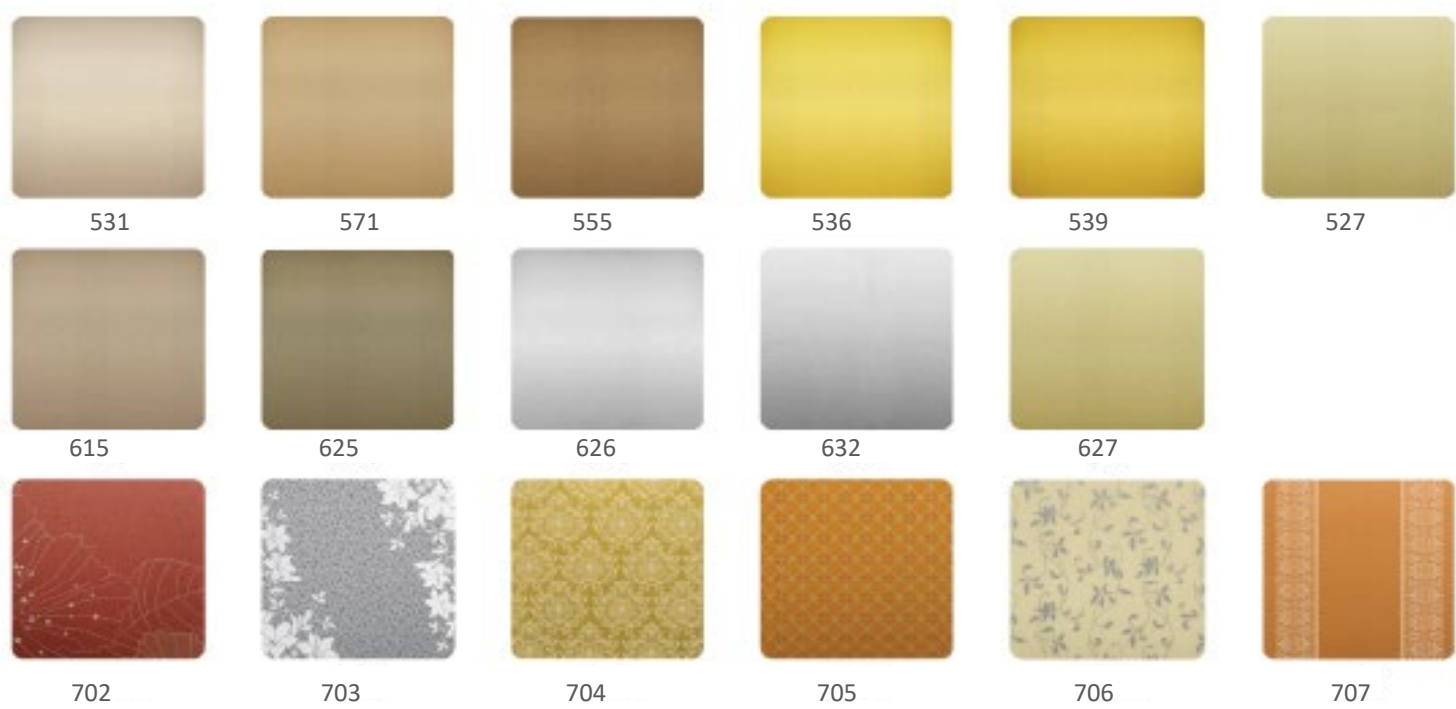
PAINT COLOR

				
HMPN-2101	HMPN-2102	HMPN-2103	HMPN-2104	HMPN-2105
				
HMPN-2201	HMPN-2202	HMPN-2203	HMPN-2204	HMPN-2205
				
HMPN-2301	HMPN-2302	HMPN-2303	HMPN-2304	HMPN-2305
				
HMPN-2401	HMPN-2402	HMPN-2403	HMPN-2404	HMPN-2405
				
HMPN-2501	HMPN-2502	HMPN-2503	HMPN-2504	HMPN-2505
				
HMPN-2601	HMPN-2602	HMPN-2603	HMPN-2604	HMPN-2605

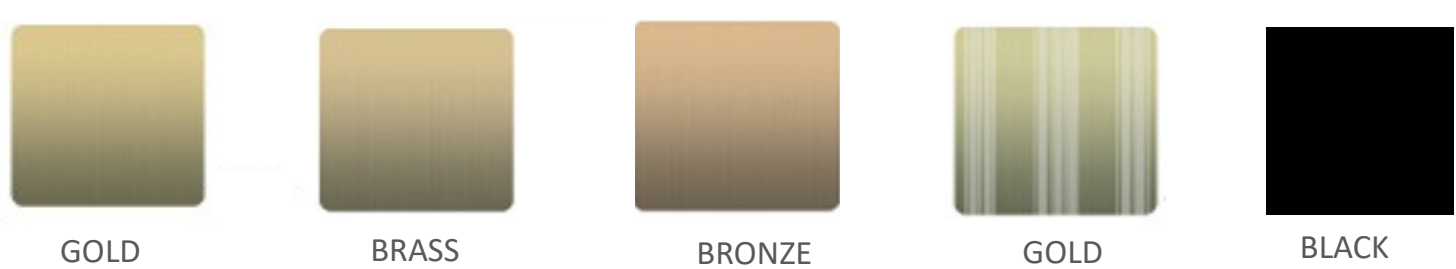
ETCHING PATTERNS

					
HMEP-5101	HMEP-5102	HMEP-5103	HMEP-5104	HMEP-5105	HMEP-5106
					
HMEP-5107	HMEP-5108	HMEP-5109	HMEP-5110	HMEP-5111	HMEP-5112

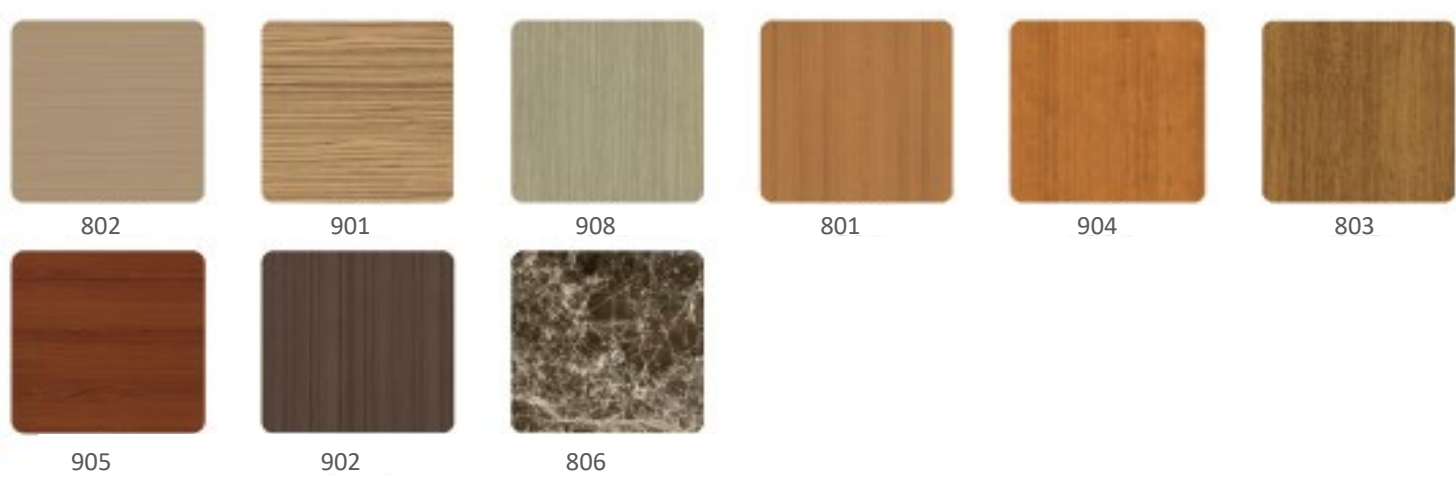
HIGH-GOSSY (SHEET STEEL METAL)



HIGH-GOSSY (CHEMI TYPE) STS HAIRLING –HIGH GLOSSY



HIGH-GOSSY (NATURAL TYPE) SHEET STEEL GRAPHIC –HIGH GLOSSY



PACKING SLIP- 1 ELEVATOR

CONSIGNEE			SHIPPING INFORMATION					
COMPANY NAME			Departure date		11/27/2017			
CONTACT			Vessel/Flight		COSCO JAPAN 063E			
ADDRESS			From /To		Busan Korea / New York,USA			
PHONE			Terms of Delivery and Payment					
			D D U NY 11370					
PROJECT			Deliver To					
HM-10760								
PO 1168								
	DESCRIPTION	Q'TY(unit)	NET WEIGHT(kg)		GROSS WEIGHT(kg)		CBM	
	P/MRL Elevator 3500Lbs × 1S 300Fpm × 14S/9F	1						
1	Machine		620	Kg	660	Kg	0.85	Cbm
2	Car Frame		700	"	785	"	2.74	"
3	Platform, Cwt Protector, Car/Hall Door		959	"	1,059	"	3.69	"
4	Car Rail #15		1,460	"	1,540	"	1.65	"
5	Car Rail #12		1,130	"	1,210	"	1.65	"
6	Cwt Frame, Buffer, Duct, Rope, M/C Beam		1,556	"	1,656	"	3.53	"
7	Rope Assy		281	"	331	"	1.19	"
8	Oil Buffer Assy		59	"	64	"	0.12	"
9	Compenchain Ass'y		190	"	214	"	0.38	"
10	Weight		1,452	"	1,492	"	0.59	"
11	Weight		1,512	"	1,552	"	0.59	"
12	Rail Bracket, Fish Plate, Bolts		945	"	1,000	"	1.41	"
TOTAL Crates :			12					
Container :			1(one) × 20'					

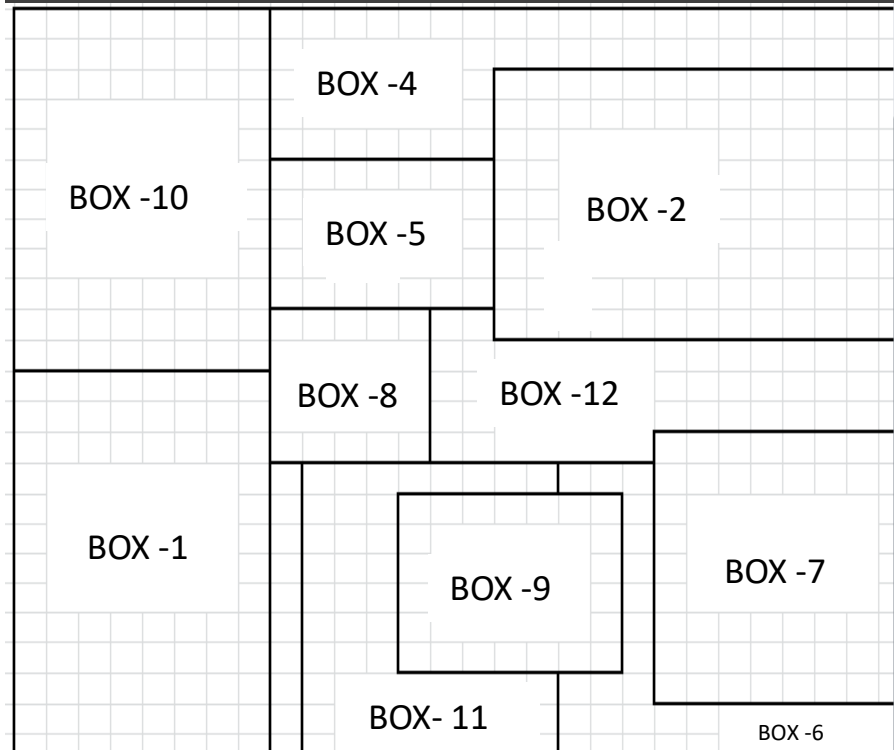
SAMPLE CRATE



SAMPLE CRATE 1

MARKS		EXPORT PACKING LIST			
HM ELEVATOR					
HM - 10760					
145 PRESIDENT STREET (P/MRL-3500-18300-148/9F)					
BOX NO : 1					
KIND OF PACKAG E	GROUP NO	ITEM	QUANTITY AND DESCRIPTION OF GOODS		MEASUREMENTS O MILLIMETER LENGTH BREADTH
BOX SIZE : 1,100 * 700 * 1,100					0.85 CBM
		MACHINE ROOM PARTS			
	A110	IMPERAL	TRACTION MACHINE WITH SHEAVE COVER	1 Set	MODEL - 478
		HIGH-TENSION	M24 * 120, (2)N, 8W, (2)HW	4 ea	
			Brake Release Device d/k	1 ea	
		SAMS	M8 * 25, NUT	4 Set	
		M16	ANCHOR	2 Set	

CONTAINER STACKING





8,000 lb 42ft Forklift

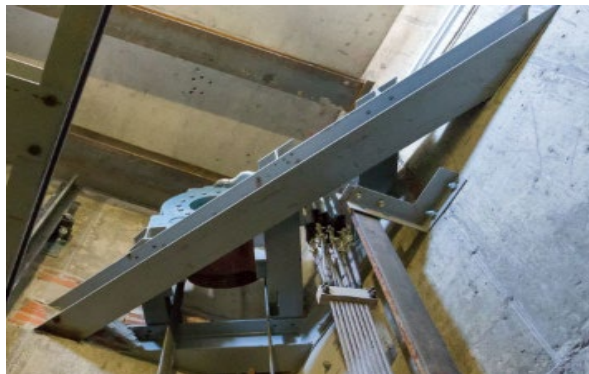
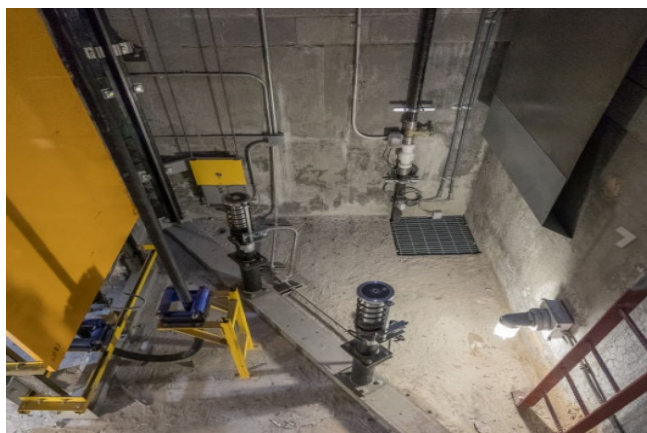
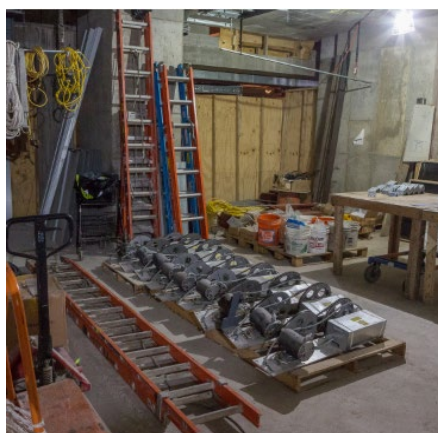
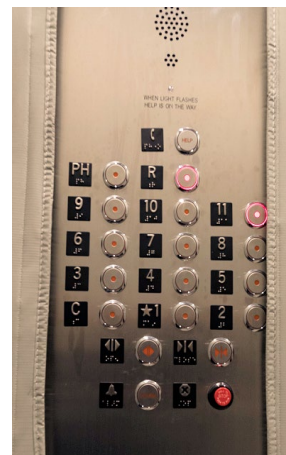
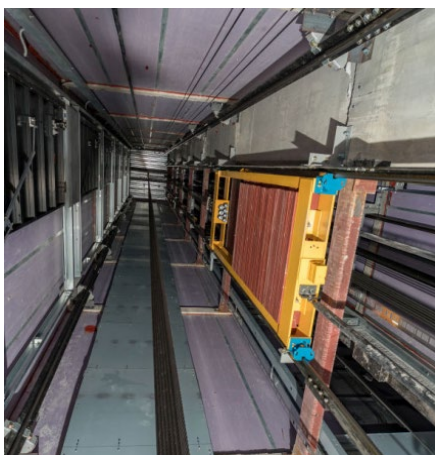
Due to its telescopic boom, the 8,000 lb 42ft forklift can reach up to 42ft. horizontally.

This device allows operators to pick objects at distances that are otherwise unreachable or hard to access. With a carrying capacity of up to 8,000 lbs, the forklift can lift all items packaged in a typical shipment.



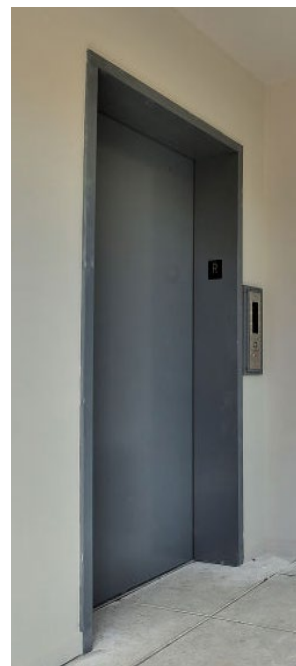
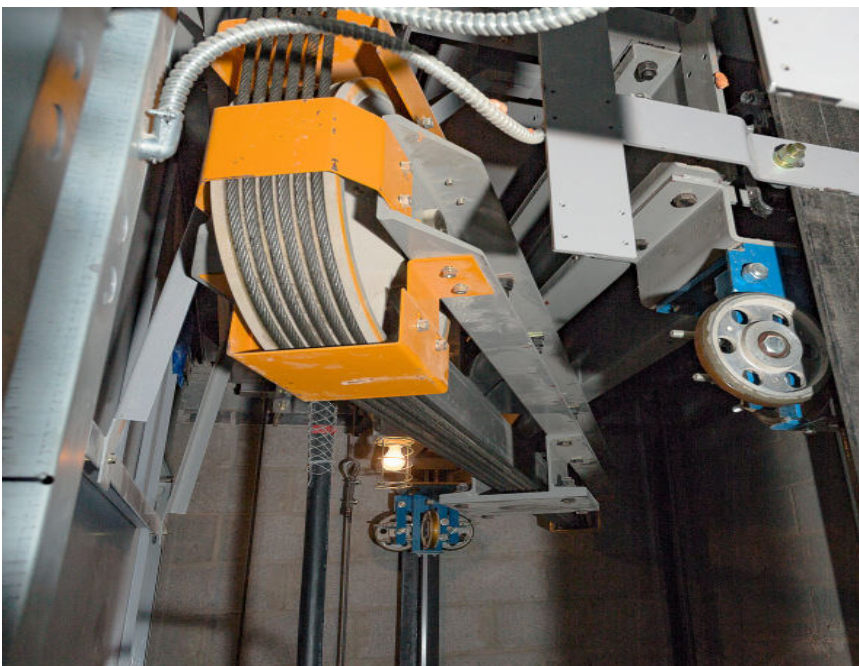
GALLERY

JOBSITE PHOTOS



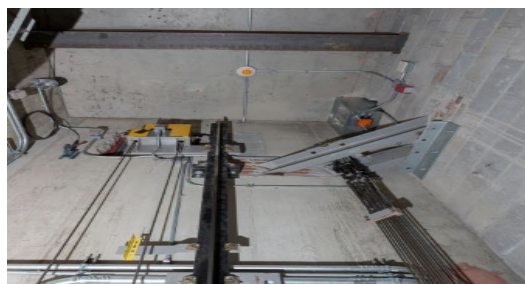
GALLERY

JOBSITE PHOTOS



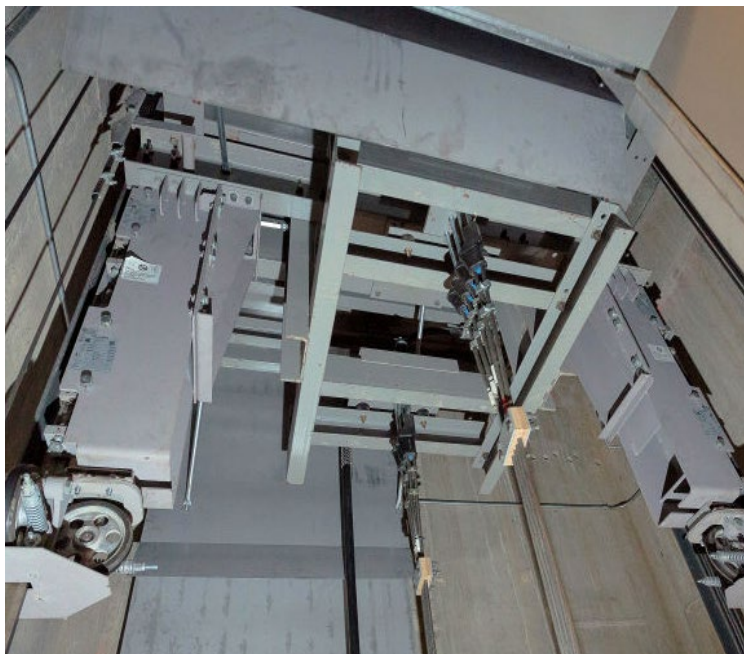
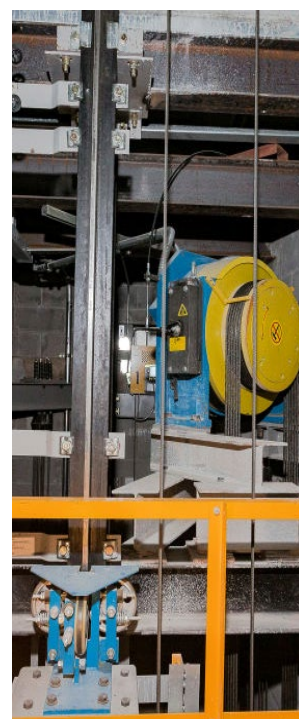
GALLERY

JOBSITE PHOTOS

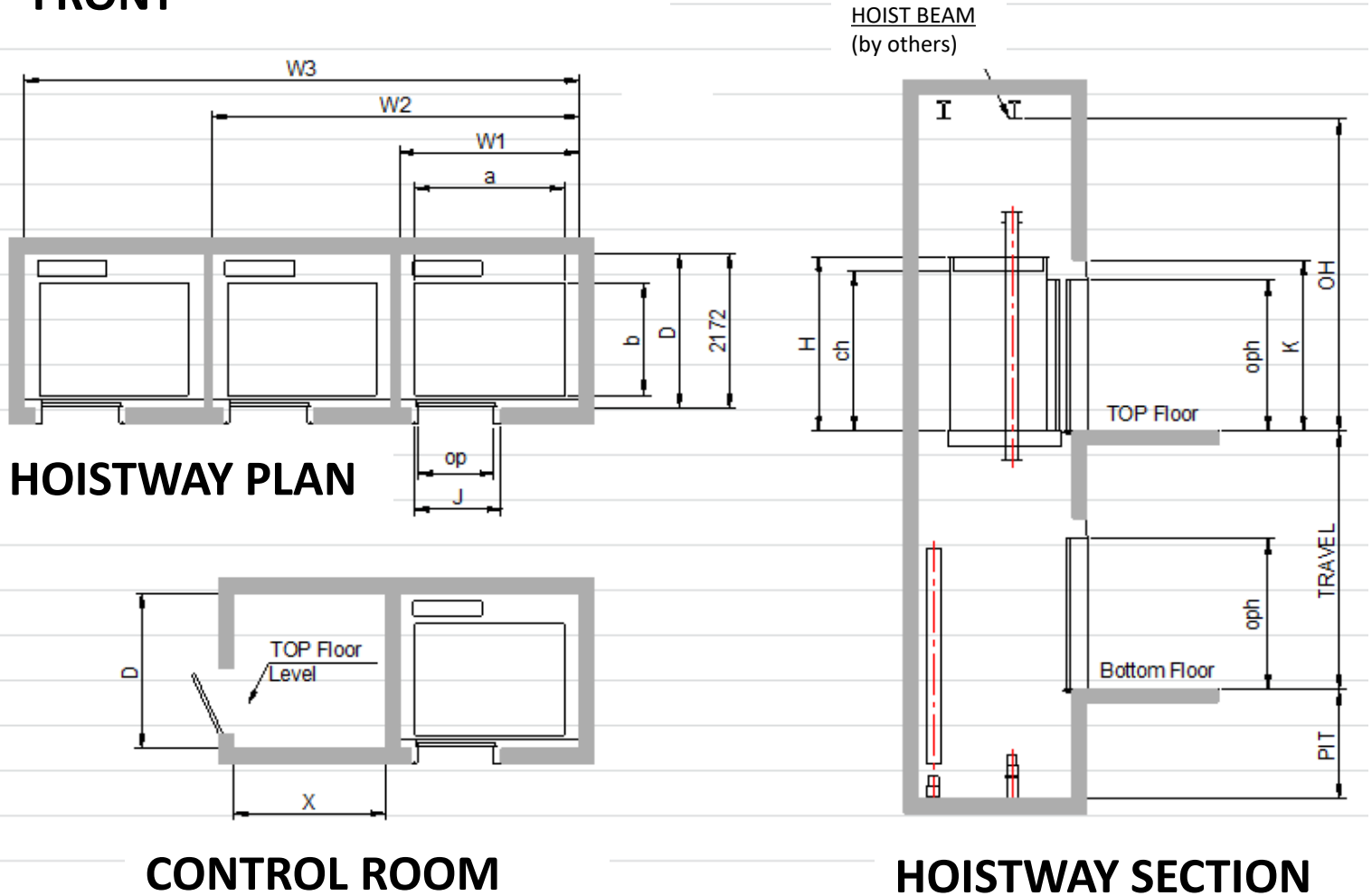


GALLERY

JOBSITE PHOTOS



FRONT

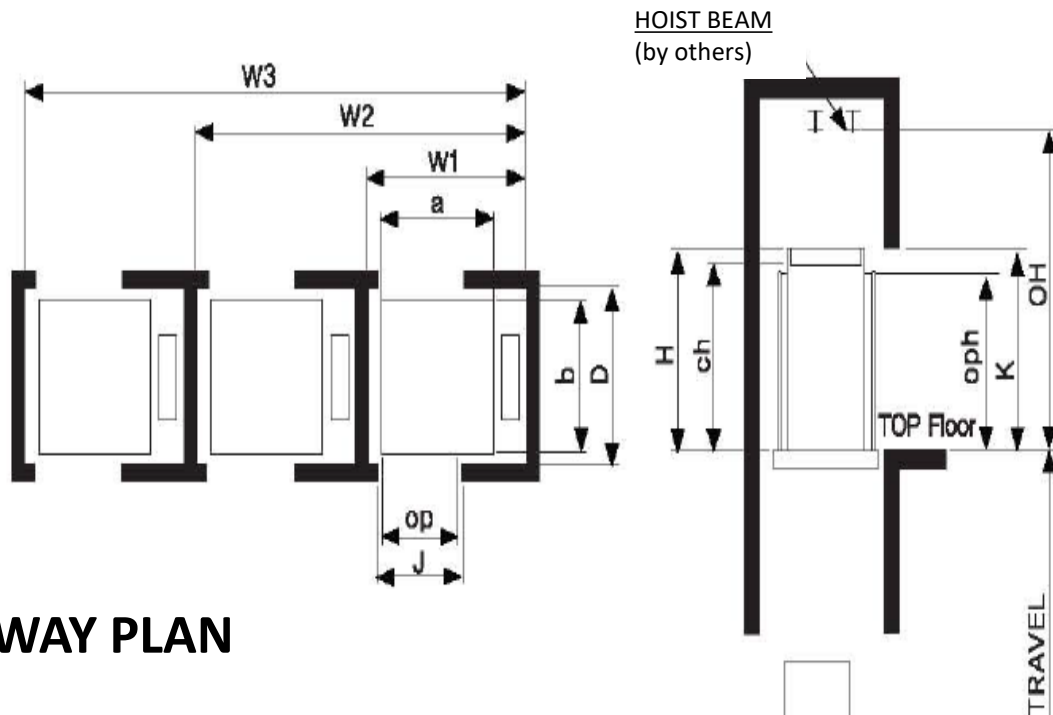


FRONT OPENING											
Type			Fork Type	Passenger elevator							
Rated lbs[Kg]			2100 [953]	2100 [950]	2500 [1134]	3000 [1361]	3500 [1588]	4000 [1814]	4000 [1814]	4500 [2041]	
Passenger Capacity			14	14	16	20	23	27	27	30	
Car											
a	Interior width		5'-8" [1728mm]	5'-8" [1728mm]	6'-8" [2032mm]	6'-8" [2032mm]	6'-8" [2032mm]	7'-8" [2336mm]	5'-8" [1728mm]	5'-8" [1728mm]	
b	Interior depth		4'-3" [1295mm]	4'-3" [1295mm]	4'-3" [1295mm]	4'-9" [1448mm]	5'-5" [1651mm]	5'-5" [1651mm]	7'-5" [2260mm]	7'-11" [2413mm]	
ch/H	Interior height/Cab height		7'-4" [2235mm] / 8'-0" [2435mm]								
op	Car door width	SS	3'-0" [914mm]	3'-0" [914mm]	3'-6" [1067mm]	3'-6" [1067mm]	3'-6" [1067mm]	---	---	---	
		CP	---	---	3'-6" [1067mm]	3'-6" [1067mm]	3'-6" [1067mm]	4'-0" [1219mm]	---	---	
		2S	---	---	---	---	---	---	4'-0" [1219mm]	4'-0" [1219mm]	
Hoistway											
Width	W1 Single hoistway		✖ 7'-4" [2235mm]	7'-4" [2235mm]	8'-4" [2540mm]	8'-4" [2540mm]	8'-4" [2540mm]	9'-8" [2946mm]	8'-4 ½" [2553mm]	8'-4 ½" [2553mm]	
			7'-7½" [2324mm]								
	W2 Double hoistway		15'-7" [4750mm]	15'-0" [4572mm]	17'-0" [5182mm]	17'-2" [5232mm]	17'-2" [5232mm]	19'-2" [5842mm]	17'-3" [5258mm]	17'-3" [5258mm]	
	W3 Triple hoistway		23'-6 ½" [7176mm]	22'-8" [6909mm]	25'-8" [7824mm]	26'-0" [7925mm]	26'-0" [7925mm]	29'-0" [8839mm]	26'-1 ½" [7963mm]	26'-1 ½" [7963mm]	
D	Depth	SS	5-11⅙" [1807mm]	6'-7 ½" [2019mm]	6'-7 ½" [2019mm]	7'-1 ½" [2172mm]	7'-10" [2388mm]	---	---	---	
		CP	---	---	6'-7 ½" [2019mm]	7'-1 ½" [2172mm]	7'-10" [2388mm]	7'-10" [2388mm]	---	---	
		2S	---	---	---	---	---	---	9'-2 ¼" [2800mm]	9'-8 ¼" [2953mm]	
J	Rough opening width	SS,CP	4'-5" [1346mm]	4'-5" [1346mm]	4'-11" [1498mm]	4'-11" [1498mm]	4'-11" [1498mm]	5'-5" [1651mm]	---	---	
		2S	---	---	---	---	---	---	5'-5" [1651mm]	5'-5" [1651mm]	
K	Rough opening height		7'-10" [2387mm]								
oph	Clear opening height		7'-0" [2134mm]								
OH	Overhead for (H=8'-0" [2435mm] car)	200FPM [1.0m/s]	16'-3 ⅜" [4962mm]	14'-1 ¼" [4311mm]		14'-3 ⅝" [4360mm]	14'-6 ⅝" [4435mm]	14'-10 ⅝" [4537mm]	17'-2 ⅝" [5248mm]	17'-4" [5283mm]	
		300FPM [1.5m/s]	16'-9 ⅝" [5121mm]	14'-7 ⅝" [4448mm]		14'-9 ⅝" [4499mm]	15'-0" [4572mm]	15'-4" [4673mm]	17'-8" [5384mm]	17'-9 ⅜" [5419mm]	
		350FPM [1.75m/s]	17'-1" [5207mm]	14'-10" [4521mm]		14'-11 ⅞" [4569mm]	15'-2 ⅞" [4645mm]	15'-6 ¾" [4744mm]	17'-10 ⅞" [5457mm]	18'-0 ⅝" [5490mm]	
		400FPM [2.0m/s]	17'-5 ¼" [5314mm]	15'-4 ½" [4687mm]		15'-9 ½" [4813mm]	15'-9 ½" [4813mm]	16'-0 ¾" [4896mm]	18'-6 ⅞" [5661mm]	18'-8 ¾" [5709mm]	
		500FPM [2.5m/s]	18'-3 ⅞" [5584mm]	16'-1 ⅝" [4918mm]		16'-6 ⅝" [5045mm]	16'-6 ⅝" [5045mm]	16'-9 ⅞" [5127mm]	19'-3 ⅞" [5890mm]	19'-5 ⅞" [5940mm]	
PIT	Pit depth	200FPM [1.0m/s]	5'-0" [1524mm]	✖ 5'-0" [1524mm]				5'-4" [1625mm]			
		300FPM [1.5m/s]	5'-6" [1676mm]	5'-6" [1676mm]							5'-9 ¼" [1759mm]
		350FPM [1.75m/s]	5'-8" [1727mm]	5'-6" [1676mm]							5'-9 ¼" [1759mm]
		400FPM [2.0m/s]	6'-2" [1880mm]	6'-3 ½" [1917mm]							6'-5 ⅞" [1978mm]
		500FPM [2.5m/s]	6'-8" [2032mm]	7'-5 ¼" [2267mm]							7'-8 ½" [2350mm]
Counterweight Location			Side Hand	Rear Hand					Side Hand		
Control Room											
X	Control room-Simplex		5'-0" [1524mm]								
	Control room-Duplex		7'-0" [2134mm]								
	Control room-Triple		9'-6" [2895mm]								

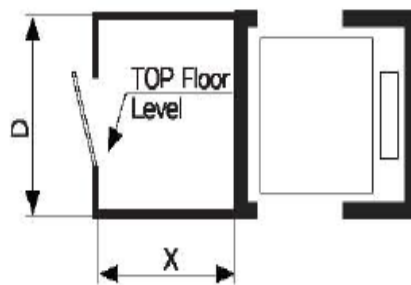
1. Increase OH dimension respectively for higher cab over 8'-0"
2. Increase hatch dimension 2" width and 2" depth for seismic application

3. Note shall be applied for up to 2,100lbs/200fpm only (CWT guide is sliding shoe type)
4. 2SSO type entrance for passenger elevators from 2,500lbs to 4,000lbs is optional.

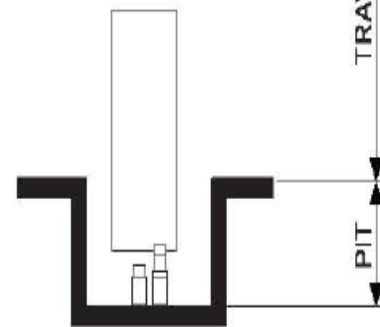
FRONT and REAR



HOISTWAY PLAN



CONTROL ROOM



HOISTWAY SECTION

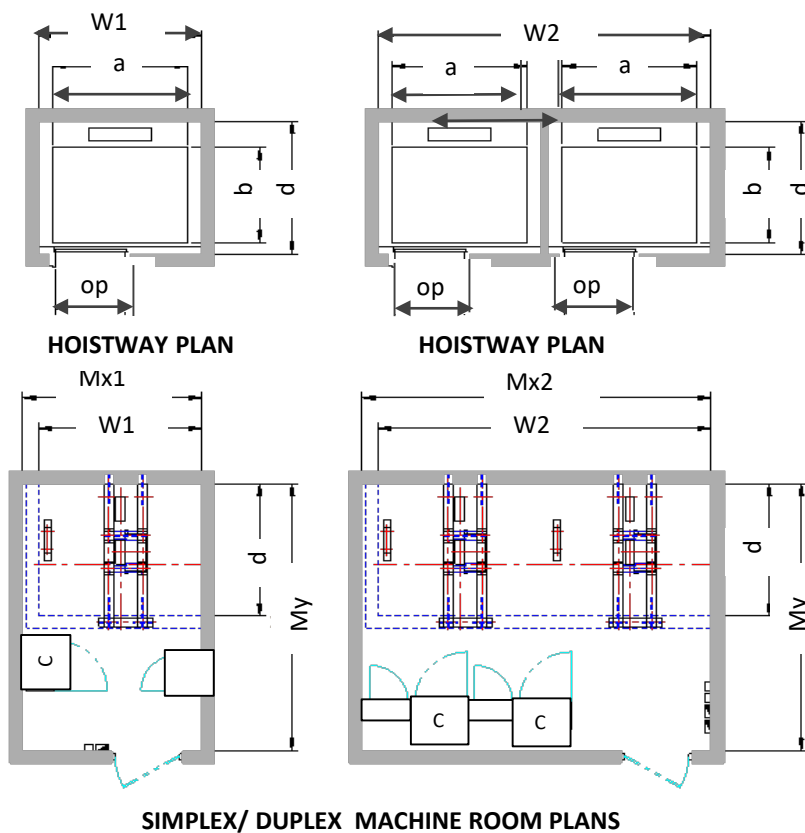
Type			Passenger elevator					Hospital elevator	
Rated lbs[Kg]			2100 [953]	2500 [1134]	3000 [1361]	3500 [1588]	4000 [1814]	4000 [1814]	4500 [2041]
Passenger Capacity			14	16	20	23	27	27	30
Car									
a	Interior width		5'-8" [1728mm]	6'-8" [2032mm]	6'-8" [2032mm]	6'-8" [2032mm]	7'-8" [2336mm]	5'-8" [1728mm]	5'-8" [1728mm]
b	Interior depth		4'-3" [1295mm]	4'-3" [1295mm]	4'-9" [1448mm]	5'-5" [1651mm]	5'-5" [1651mm]	7'-5" [2260mm]	7'-11" [2413mm]
ch	Interior height		7'-4" [2235mm] / 8'-0" [2435mm]						
op	Car door width	SS	3'-0" [914mm]	3'-6" [1067mm]	3'-6" [1067mm]	3'-6" [1067mm]	---	---	---
		CP	3'-0" [914mm]	3'-6" [1067mm]	3'-6" [1067mm]	3'-6" [1067mm]	4'-0" [1219mm]	---	---
		2S	---	---	---	---	---	4'-0" [1219mm]	4'-0" [1219mm]
Hoistway									
Width	W1 Single hoistway		8'-4" [2540mm]	9'-4" [2845mm]	9'-4" [2845mm]	9'-4" [2845mm]	10'-4" [3150mm]	8'-4 ½" [2553mm]	8'-4 ½" [2553mm]
	W2 Double hoistway		17'-0" [5182mm]	19'-0" [5792mm]	19'-2" [5842mm]	19'-2" [5842mm]	21'-2" [6452mm]	17'-3" [5258mm]	17'-3" [5258mm]
	W3 Triple hoistway		25'-8" [7824mm]	28'-8" [8739mm]	29'-0" [8839mm]	29'-0" [8839mm]	32'-0" [9754mm]	26'-1 ½" [7963mm]	26'-1 ½" [7963mm]
D	Depth	SS	6'-8" [2032mm]	6'-8" [2032mm]	7'-2" [2184mm]	7'-10" [2388mm]	---	---	---
		CP	6'-8" [2032mm]	6'-8" [2032mm]	7'-2" [2184mm]	7'-10" [2388mm]	7'-10" [2388mm]	---	---
		2S	---	---	---	---	---	10'-4 ¾" [3160mm]	10'-10 ½" [3313mm]
J	Rough opening width	SS,CP	4'-5" [1346mm]	4'-11" [1498mm]	4'-11" [1498mm]	4'-11" [1498mm]	5'-5" [1651mm]	---	---
		2S	---	---	---	---	---	5'-5" [1651mm]	5'-5" [1651mm]
K	Rough opening height		7'-10" [2387mm]						
oph	Clear opening height		7'-0" [2134mm]						
OH	Overhead for 8'-0" car [2435mm]	200FPM [1.0m/s]	16'-5 ¾" [5022mm]		16'-7 ¾" [5073mm]		16'-10 ⅝" [5147mm]	17'-2 ⅝" [5248mm] [5283mm]	
		300FPM [1.5m/s]	16'-11 ⅛" [5159mm]		17'-1 ⅛" [5210mm]		17'-4" [5283mm]	17'-8" [5384mm] [5419mm]	
		350FPM [1.75m/s]	17'-2" [5232mm]		17'-4" [5283mm]		17'-6 ⅞" [5356mm]	17'-10 ⅞" [5457mm] [5490mm]	
		400FPM [2.0m/s]	17'-10 ⅝" [5451mm]		18'-3 ½" [5575mm]		18'-3 ½" [5575mm]	18'-6 ⅞" [5661mm] [5709mm]	
		500FPM [2.5m/s]	18'-7 ⅝" [5680mm]		19'-0 ⅝" [5807mm]		19'-0 ⅝" [5807mm]	19'-3 ⅞" [5890mm] [5940mm]	
PIT	Pit depth	200FPM [1.0m/s]	5'-0" [1524mm]				5'-4" [1625mm]		
		300FPM [1.5m/s]	5'-6" [1676mm]						5'-9 ¼" [1759mm]
		350FPM [1.75m/s]	5'-6" [1676mm]						5'-9 ¼" [1759mm]
		400FPM [2.0m/s]	6'-3 ½" [1917mm]						6'-5 ⅞" [1978mm]
		500FPM [2.5m/s]	7'-5 ¼" [2267mm]						7'-8 ½" [2350mm]
Counterweight Location			Side Hand						
Control Room									
X	Control room-Simplex		5'-0" [1524mm]						
	Control room-Duplex		7'-0" [2134mm]						
	Control room-Triple		9'-6" [2895mm]						

1-Increase overhead respectively for cab over 8'-0"

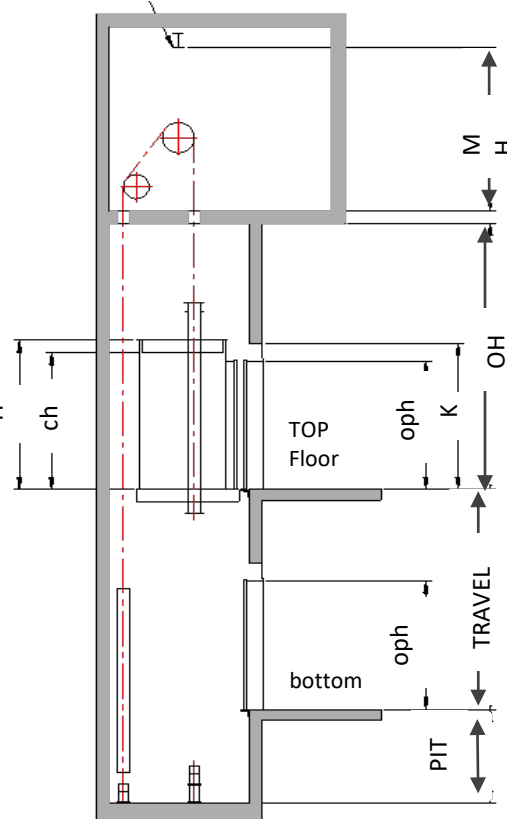
2-Increase hoistway dimensions 2" width and 2" depth for seismic application

3-SSSO type Entrance for passenger elevators 2500 to 4000 lbs is optional

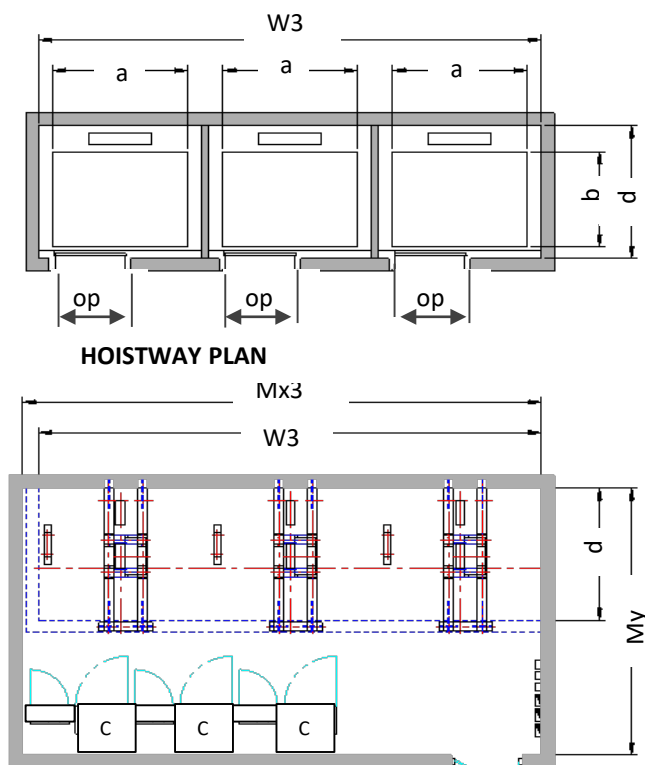
FRONT



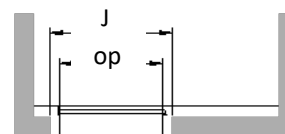
HOIST BEAM
(by others)



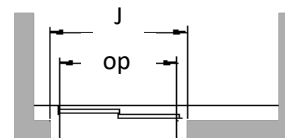
HOISTWAY SECTION



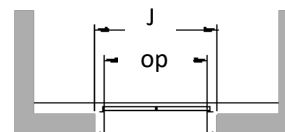
TRIPLEX MACHINE ROOM PLAN



Single - speed doors



Two- speed doors



Center - parting doors

ENTRANCE PLAN

OVERHEAD

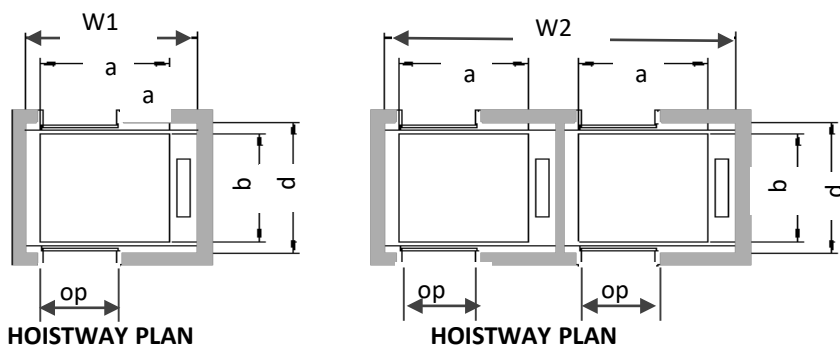
PLANNING GUIDE (FRONT)

Type			Passenger elevator					Hospital elevator	
Rated lbs[Kg]			2100 [953]	2500 [1134]	3000 [1361]	3500 [1588]	4000 [1814]	4000 [1814]	4500 [2041]
Passenger Capacity			14	16	20	23	27	27	30
Car									
a	Interior width		5'-8" [1728mm]	6'-8" [2032mm]	6'-8" [2032mm]	6'-8" [2032mm]	7'-8" [2336mm]	5'-8" [1728mm]	5'-8" [1728mm]
b	Interior depth		4'-3" [1295mm]	4'-3" [1295mm]	4'-9" [1448mm]	5'-5" [1651mm]	5'-5" [1651mm]	7'-5" [2260mm]	7'-11" [2413mm]
op	Car door width	SS	3'-0" [914mm]	3'-6" [1067mm]	3'-6" [1067mm]	3'-6" [1067mm]	---	---	---
		CP	---	3'-6" [1067mm]	3'-6" [1067mm]	3'-6" [1067mm]	4'-0" [1219mm]	---	---
		2S	---	---	---	---	---	4'-0" [1219mm]	4'-0" [1219mm]
Hoistway									
Width	W1 Single hoistway		7'-4" [2235mm]	8'-4" [2540mm]	8'-4" [2540mm]	8'-4" [2540mm]	9'-8" [2946mm]	8'-4 ½" [2553mm]	8'-4 ½" [2553mm]
	2 DouWble hoistway		15'-0" [4572mm]	17'-0" [5182mm]	17'-2" [5232mm]	17'-2" [5232mm]	19'-2" [5842mm]	17'-3" [5258mm]	17'-3" [5258mm]
	W3 Triple hoistway		22'-8" [6909mm]	25'-8" [7824mm]	26'-0" [7925mm]	26'-0" [7925mm]	29'-0" [8839mm]	26'-1 ½" [7963mm]	26'-1 ½" [7963mm]
D	Depth	SS	6'-7 ½" [2019mm]	6'-7 ½" [2019mm]	7'-1 ½" [2172mm]	7'-10" [2388mm]	---	---	---
		CP	---	6'-7 ½" [2019mm]	7'-1 ½" [2172mm]	7'-10" [2388mm]	7'-10" [2388mm]	---	---
		2S	---	---	---	---	---	9'-2 ¼" [2800mm]	9'-8 ¼" [2953mm]
J	Rough opening width	SS,CP	4'-5" [1346mm]	4'-11" [1498mm]	4'-11" [1498mm]	4'-11" [1498mm]	5'-5" [1651mm]	---	---
		2S	---	---	---	---	---	5'-5" [1651mm]	5'-5" [1651mm]
K	Rough opening height		7'-10" [2387mm]						
oph	Clear opening height		7'-0" [2134mm]						
OH	Overhead for (H=8'-0" [2435mm] car)	200FPM [1.0m/s]	15'-0" [4572mm]					15'-8" [4775mm]	
		300FPM [1.5m/s]	15'-6" [4724mm]					16'-2" [4928mm]	
		350FPM [1.75m/s]	16'-0" [4877mm]					16'-8" [5080mm]	
		400FPM [2.0m/s]	16'-6" [5029mm]					17'-2" [5232mm]	
		500FPM [2.5m/s]	17'-6" [5334mm]					18'-2" [5537mm]	
PIT	Pit depth	200FPM [1.0m/s]	5'-0" [1524mm]				5'-4" [1625mm]		
		300FPM [1.5m/s]	5'-6" [1676mm]						5'-9" [1752mm]
		350FPM [1.75m/s]	5'-8" [1727mm]						5'-11" [1803mm]
		400FPM [2.0m/s]	6'-2" [1880mm]						6'-5" [1956mm]
		500FPM [2.5m/s]	6'-8" [2032mm]						6'-11" [2108mm]
Machine Room									
Mx3	Single Machine Room Width		8'-0" [2438mm]	9'-0" [2743mm]	9'-0" [2743mm]	9'-0" [2743mm]	10'-0" [3048mm]	9'-0 ½" [2756mm]	9'-0 ½" [2756mm]
	Double Machine Room Width		15'-8" [4775mm]	17'-8" [5385mm]	17'-10" [5436mm]	17'-10" [5436mm]	19'-10" [6045mm]	17'-11" [5461mm]	17'-11" [5461mm]
	Triple Machine Room Width		23'-4" [7112mm]	26'-4" [8026mm]	26'-8" [8128mm]	26'-8" [8128mm]	29'-8" [9042mm]	26'-9 ½" [8166mm]	26'-9 ½" [8166mm]
My	Machine Room depth		14'-6" [4420mm]	14'-6" [4420mm]	15'-0" [4572mm]	15'-8" [4775mm]	15'-8" [4775mm]	16'-5" [5004mm]	16'-11" [5156mm]

1-Increase overhead respectively for cab over 8'-0"

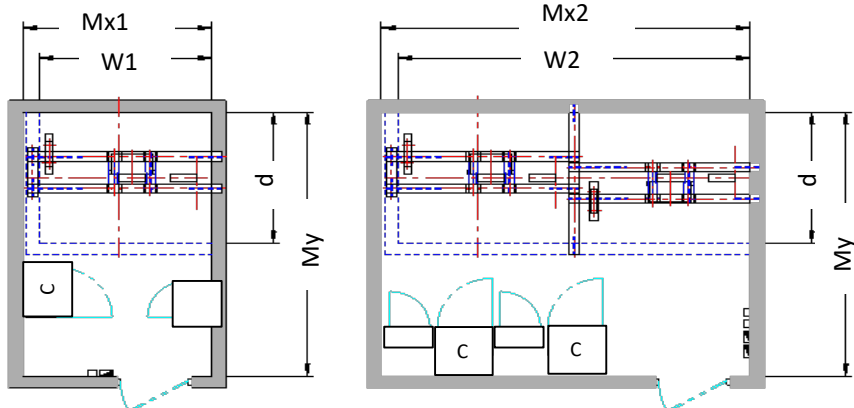
2-Increase hoistway dimensions 2" width and 2" depth for seismic application .

FRONT & REAR



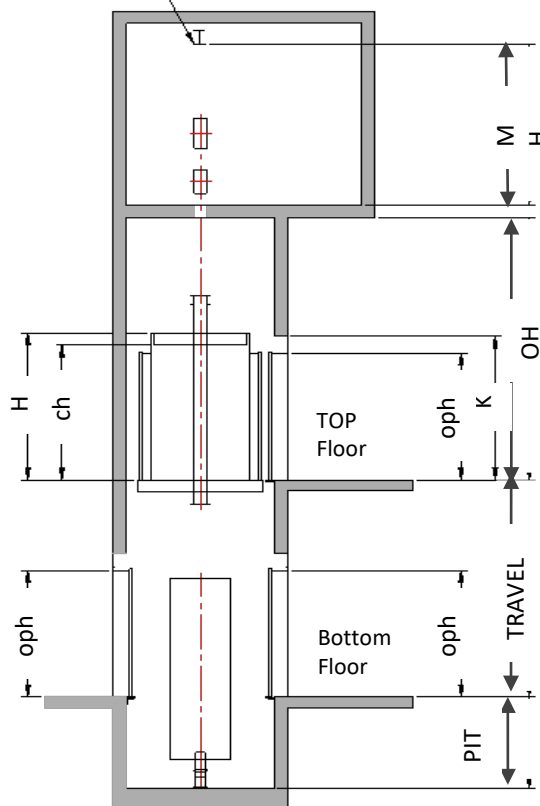
HOISTWAY PLAN

HOISTWAY PLAN

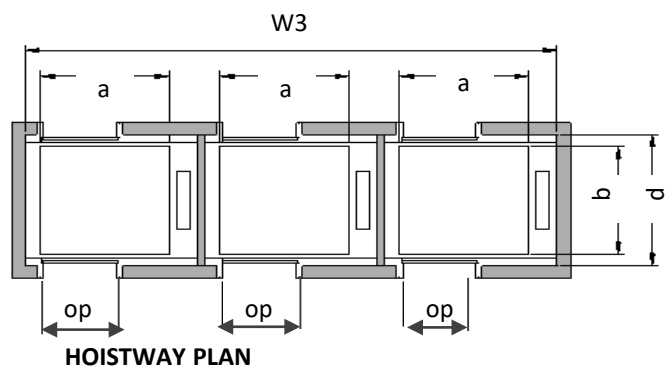


SIMPLEX/ DUPLEX MACHINE ROOM PLANS

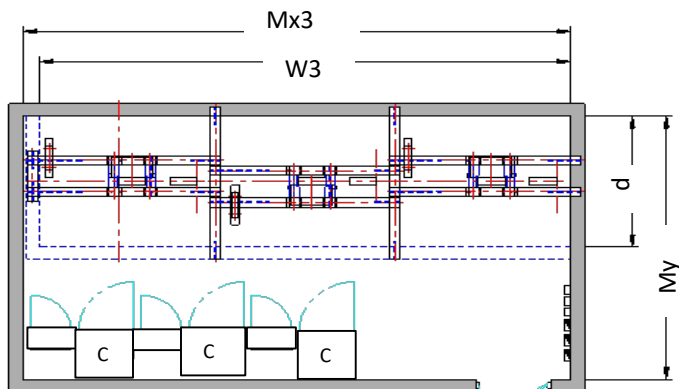
HOIST BEAM
(by others)



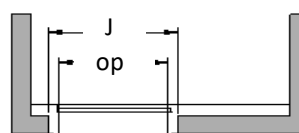
HOISTWAY SECTION



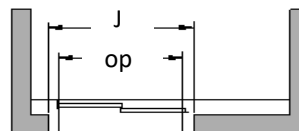
HOISTWAY PLAN



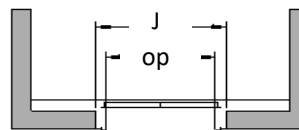
TRIPLEX MACHINE ROOM PLAN



Single - speed doors



Two- speed doors



Center - parting doors

ENTRANCE PLAN

OVERHEAD

PLANNING GUIDE (F & R)

Type			Passenger elevator					Hospital elevator	
Rated lbs[Kg]			2100 [953]	2500 [1134]	3000 [1361]	3500 [1588]	4000 [1814]	4000 [1814]	4500 [2041]
Passenger Capacity			14	16	20	23	27	27	30
Car									
a	Interior width		5'-8" [1728mm]	6'-8" [2032mm]	6'-8" [2032mm]	6'-8" [2032mm]	7'-8" [2336mm]	5'-8" [1728mm]	5'-8" [1728mm]
b	Interior depth		4'-3" [1295mm]	4'-3" [1295mm]	4'-9" [1448mm]	5'-5" [1651mm]	5'-5" [1651mm]	7'-5" [2260mm]	7'-11" [2413mm]
ch/H	Interior height/Cab height								
Op	Car door width	SS	3'-0" [914mm]	3'-6" [1067mm]	3'-6" [1067mm]	3'-6" [1067mm]	---	---	---
		CP	---	3'-6" [1067mm]	3'-6" [1067mm]	3'-6" [1067mm]	4'-0" [1219mm]	---	---
		2S	---	---	---	---	---	4'-0" [1219mm]	4'-0" [1219mm]
Hoistway									
Width	W1 Single hoistway		8'-4" [2540mm]	9'-4" [2845mm]	9'-4" [2845mm]	9'-4" [2845mm]	10'-4" [3150mm]	8'-4 ½" [2553mm]	8'-4 ½" [2553mm]
	W2 Double hoistway		17'-0" [5182mm]	19'-0" [5792mm]	19'-2" [5842mm]	19'-2" [5842mm]	21'-2" [6452mm]	17'-3" [5258mm]	17'-3" [5258mm]
	W3 Triple hoistway		25'-8" [7824mm]	28'-8" [8739mm]	29'-0" [8839mm]	29'-0" [8839mm]	32'-0" [9754mm]	26'-1 ½" [7963mm]	26'-1 ½" [7963mm]
D	Depth	SS	6'-8" [2032mm]	6'-8" [2032mm]	7'-2" [2184mm]	7'-10" [2388mm]	---	---	---
		CP	6'-8" [2032mm]	6'-8" [2032mm]	7'-2" [2184mm]	7'-10" [2388mm]	7'-10" [2388mm]	---	---
		2S	---	---	---	---	---	10'-4 ¾" [3160mm]	10'-10 ½" [3313mm]
J	Rough opening width	SS,CP	4'-5" [1346mm]	4'-11" [1498mm]	4'-11" [1498mm]	4'-11" [1498mm]	5'-5" [1651mm]	---	---
		2S	---	---	---	---	---	5'-5" [1651mm]	5'-5" [1651mm]
K	Rough opening height		7'-10" [2387mm]						
Oph	Clear opening height		7'-0" [2134mm]						
OH	Overhead for (H=8'-0" [2435mm] car)	200FPM [1.0m/s]	15'-0" [4572mm]					15'-8" [4775mm]	
		300FPM [1.5m/s]	15'-6" [4724mm]					16'-2" [4928mm]	
		350FPM [1.75m/s]	16'-0" [4877mm]					16'-8" [5080mm]	
		400FPM [2.0m/s]	16'-6" [5029mm]					17'-2" [5232mm]	
		500FPM [2.5m/s]	17'-6" [5334mm]					18'-2" [5537mm]	
PIT	Pit depth	200FPM [1.0m/s]	5'-0" [1524mm]				5'-4" [1625mm]		
		300FPM [1.5m/s]	5'-6" [1676mm]						5'-9" [1752mm]
		350FPM [1.75m/s]	5'-8" [1727mm]						5'-11" [1803mm]
		400FPM [2.0m/s]	6'-2" [1880mm]						6'-5" [1956mm]
		500FPM [2.5m/s]	6'-8" [2032mm]						6'-11" [2108mm]
Machine Room									
Mx3	Single Machine Room Width		9'-0" [2743mm]	10'-0" [3048mm]	10'-0" [3048mm]	10'-0" [3048mm]	11'-0" [3342mm]	9'-0 ½" [2756mm]	9'-0 ½" [2756mm]
	Double Machine Room Width		17'-8" [5385mm]	19'-8" [5994mm]	19'-10" [6045mm]	19'-10" [6045mm]	21'-10" [6655mm]	17'-11" [5461mm]	17'-11" [5461mm]
	Triple Machine Room Width		26'-4" [8026mm]	29'-4" [8940mm]	29'-8" [9093mm]	29'-8" [9093mm]	32'-8" [9957mm]	26'-9 ½" [8166mm]	26'-9 ½" [8166mm]
My	Machine Room depth		14'-6" [4420mm]	14'-6" [4420mm]	15'-0" [4572mm]	15'-8" [4775mm]	15'-8" [4775mm]	16'-5" [5004mm]	16'-11" [5156mm]

1-Increase overhead respectively for cab over 8'-0" application

2-Increase hoistway dimensions 2" width and 2" depth for seismic



elev^{ator}
packages

Sales and Engineering

833-BTS-ELEV (287-3538)

Email: sales@btselevators.com

www.btselevators.com